

ALFA Sonars Testing - 2015/08/27

Analysis Notes

- Could not match any of the 45 captures selected for this day from the VDOS between the Blueview and Simrad images due to difficulties differentiating signals from background noise.
- The first 4 slides show the strongest Simrad detections and the corresponding VDOS images. The detections not necessarily are significant as the target was not identified.
- Slides 11 to 14 show times corresponding to visual detections noted in field notes in Blueview (and Simrad in one case).

2015/08/27 11:52

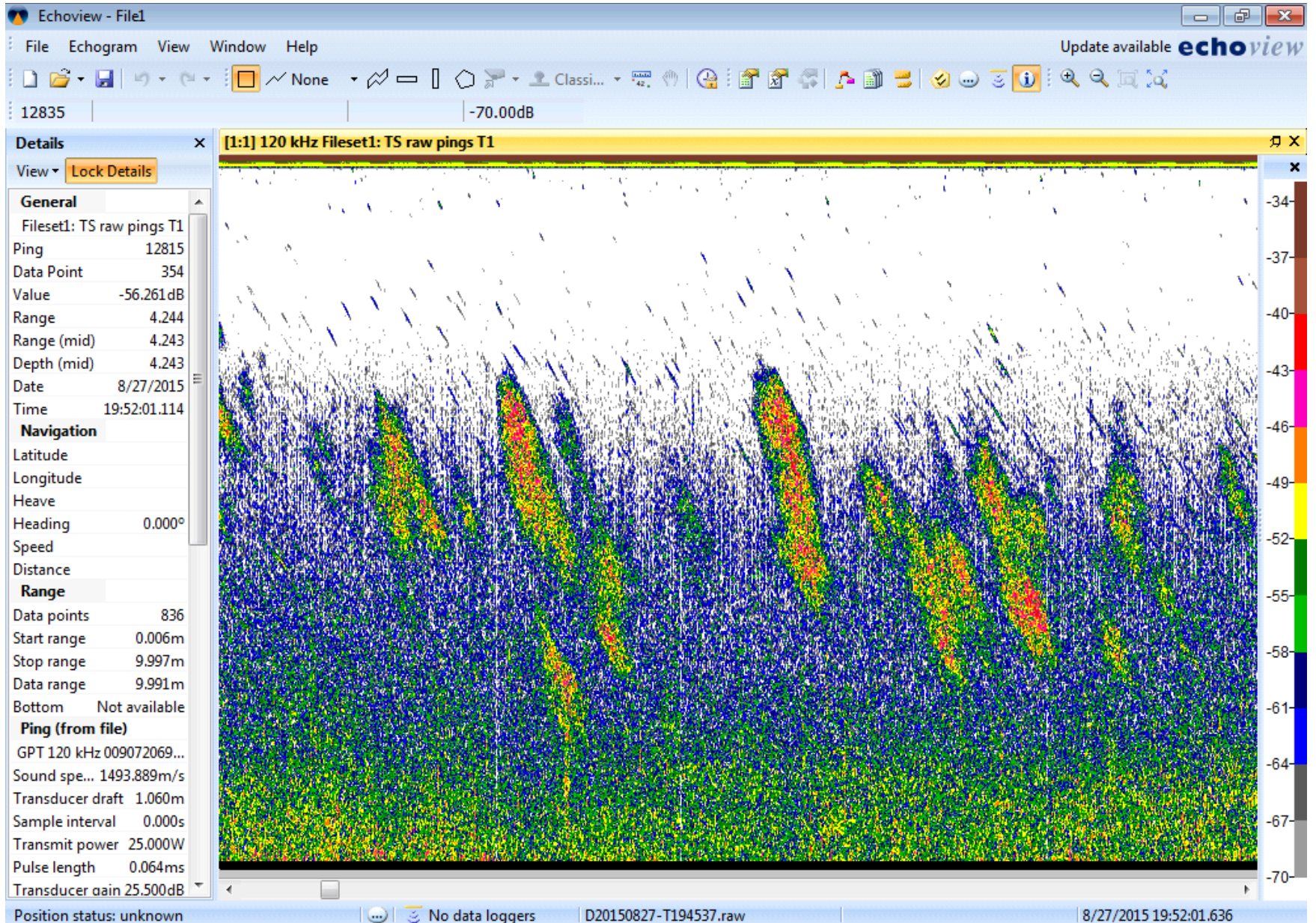
2015/08/27 11:52:01 Onshore

+19.8 C / 1412



Woody debris

Simrad



2015/08/27 12:02

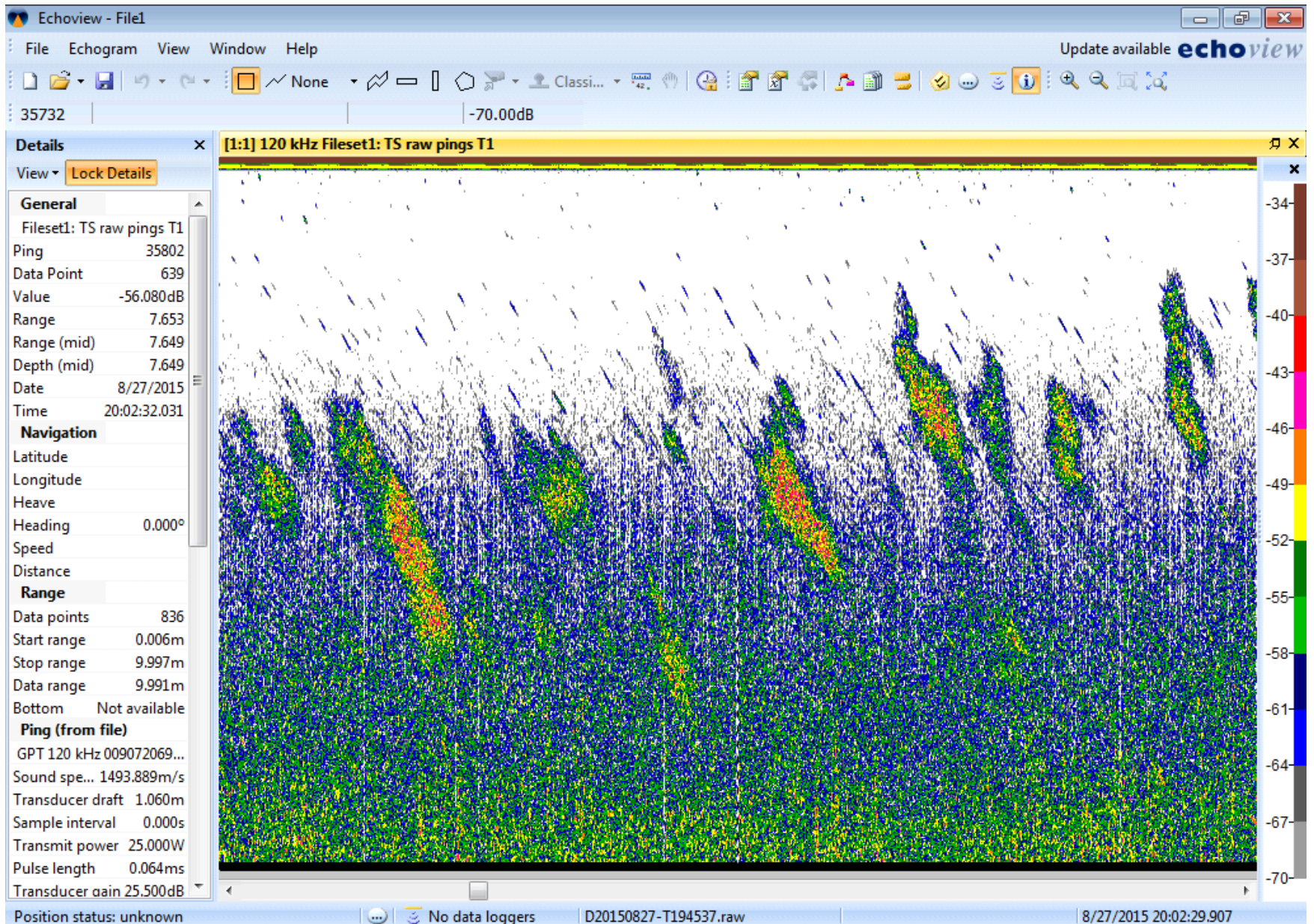
2015/08/27 12:02:32 Onshore

+19.8 C / 1412



Woody debris

Simrad



2015/08/27 12:27

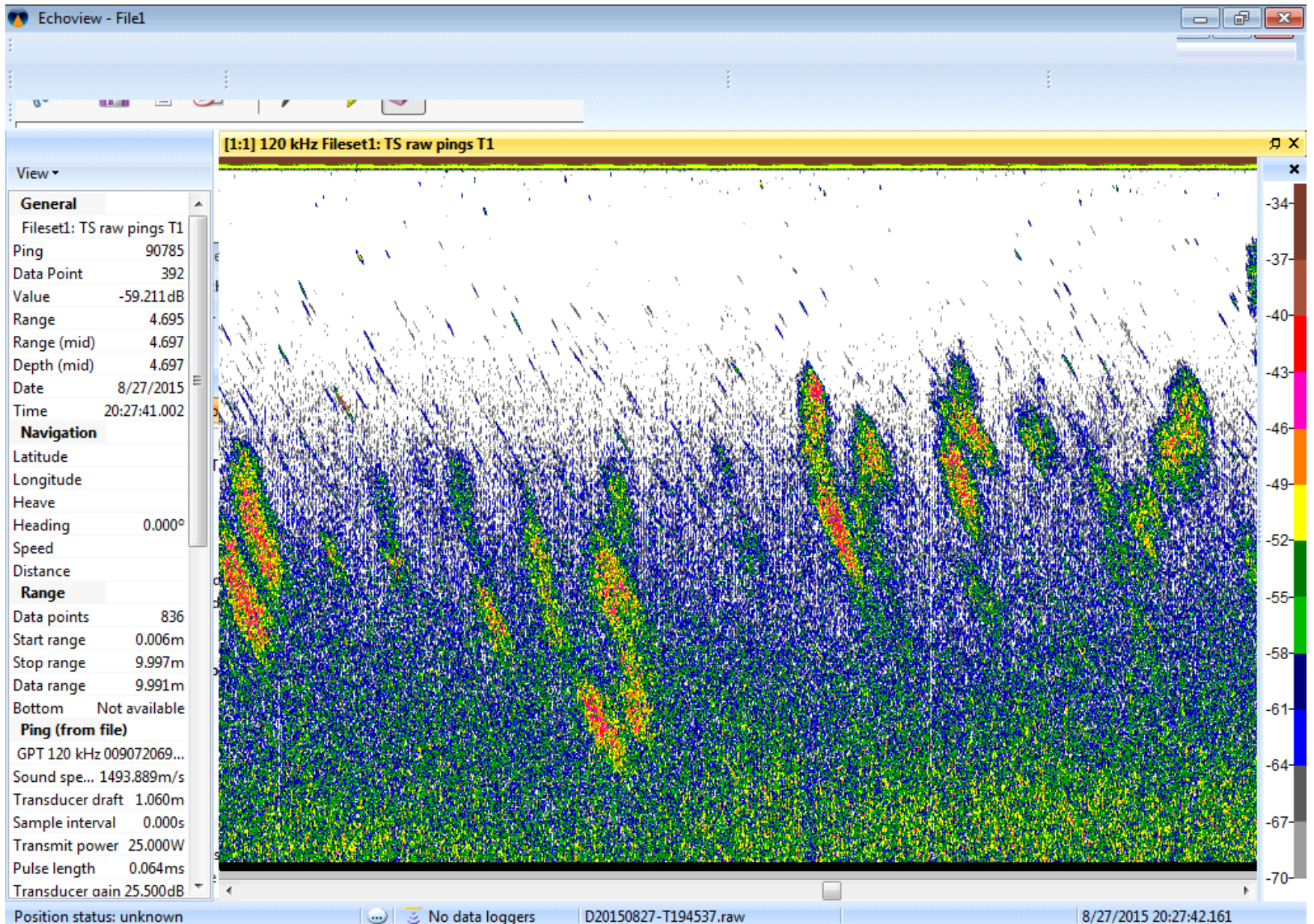
2015/08/27 12:27:41 Onshore

+19.8 C / 1412



Woody debris

Simrad



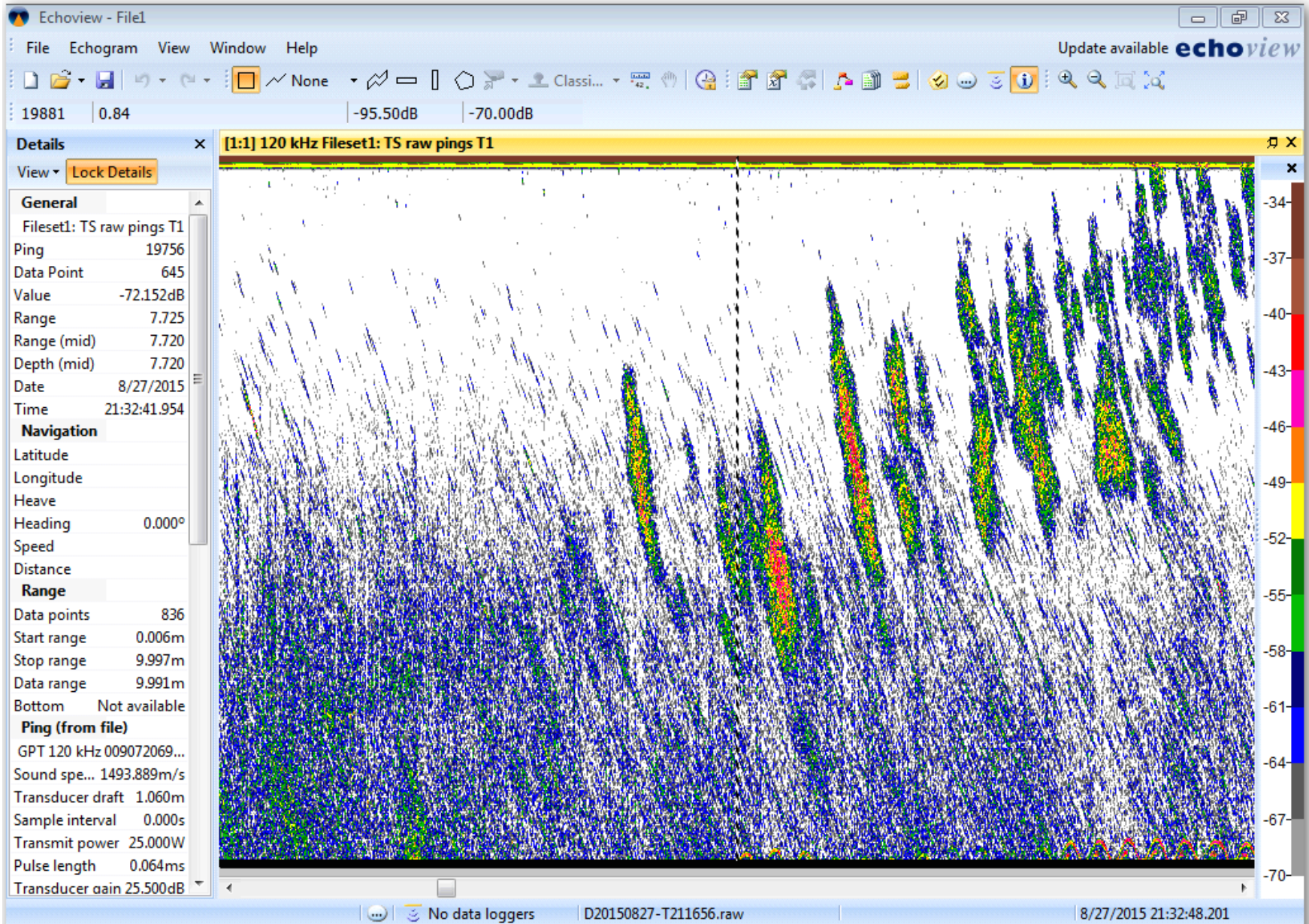
2015/08/27 13:32

2015/08/27 13:32:42 Onshore

+19.2 C / 1412

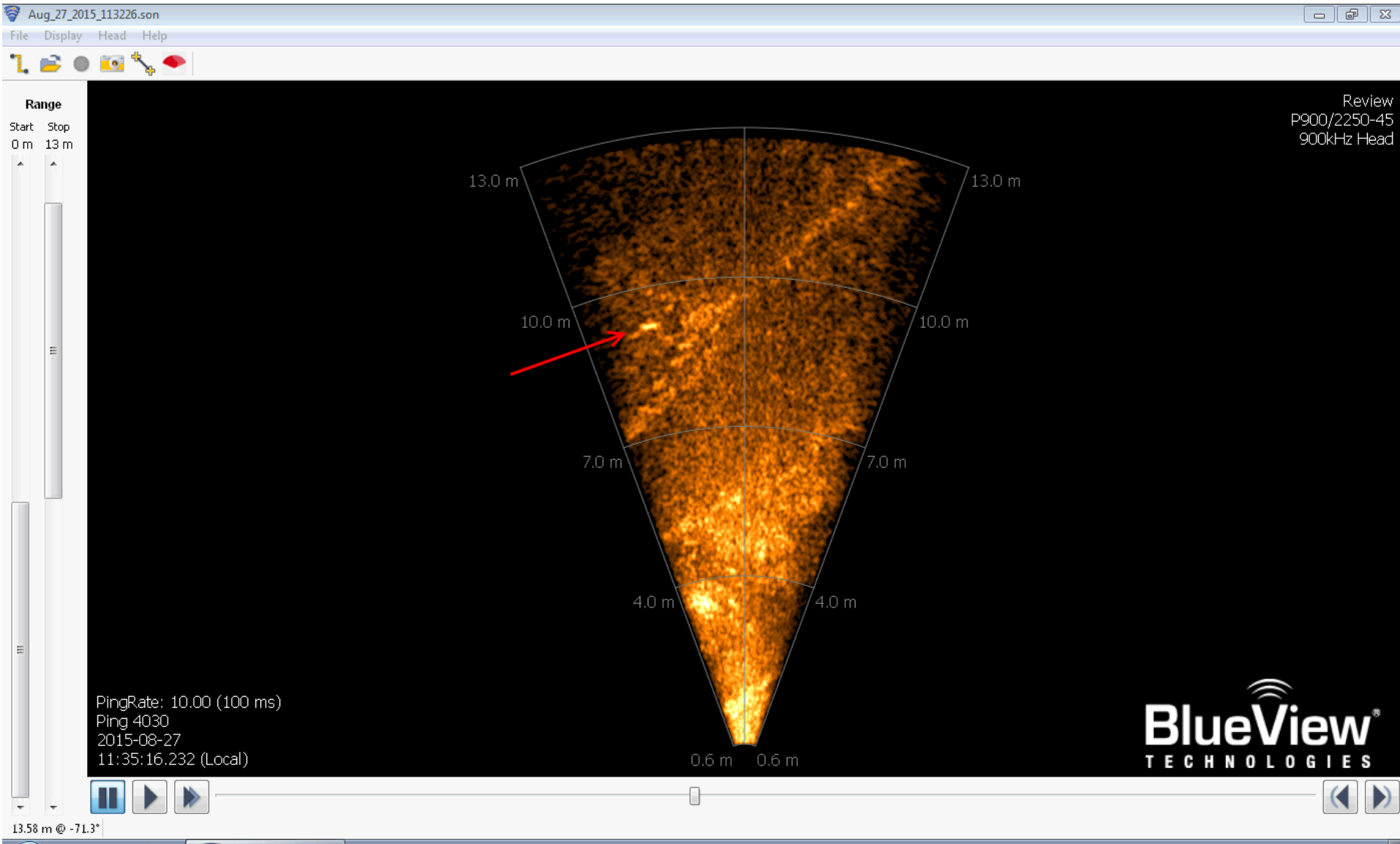


Simrad



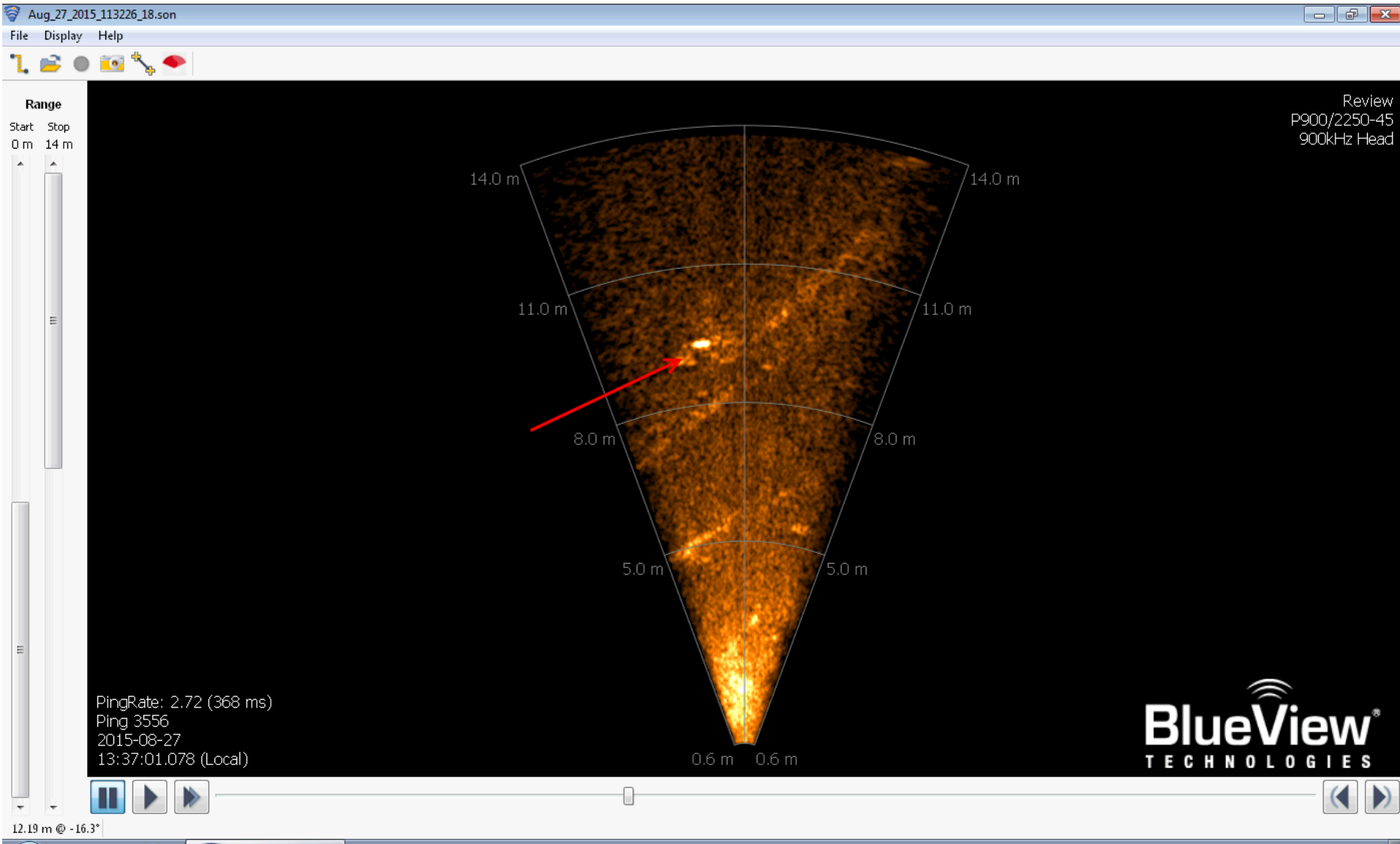
11:35 AM: Can see float moving back and forth on BV

BlueView

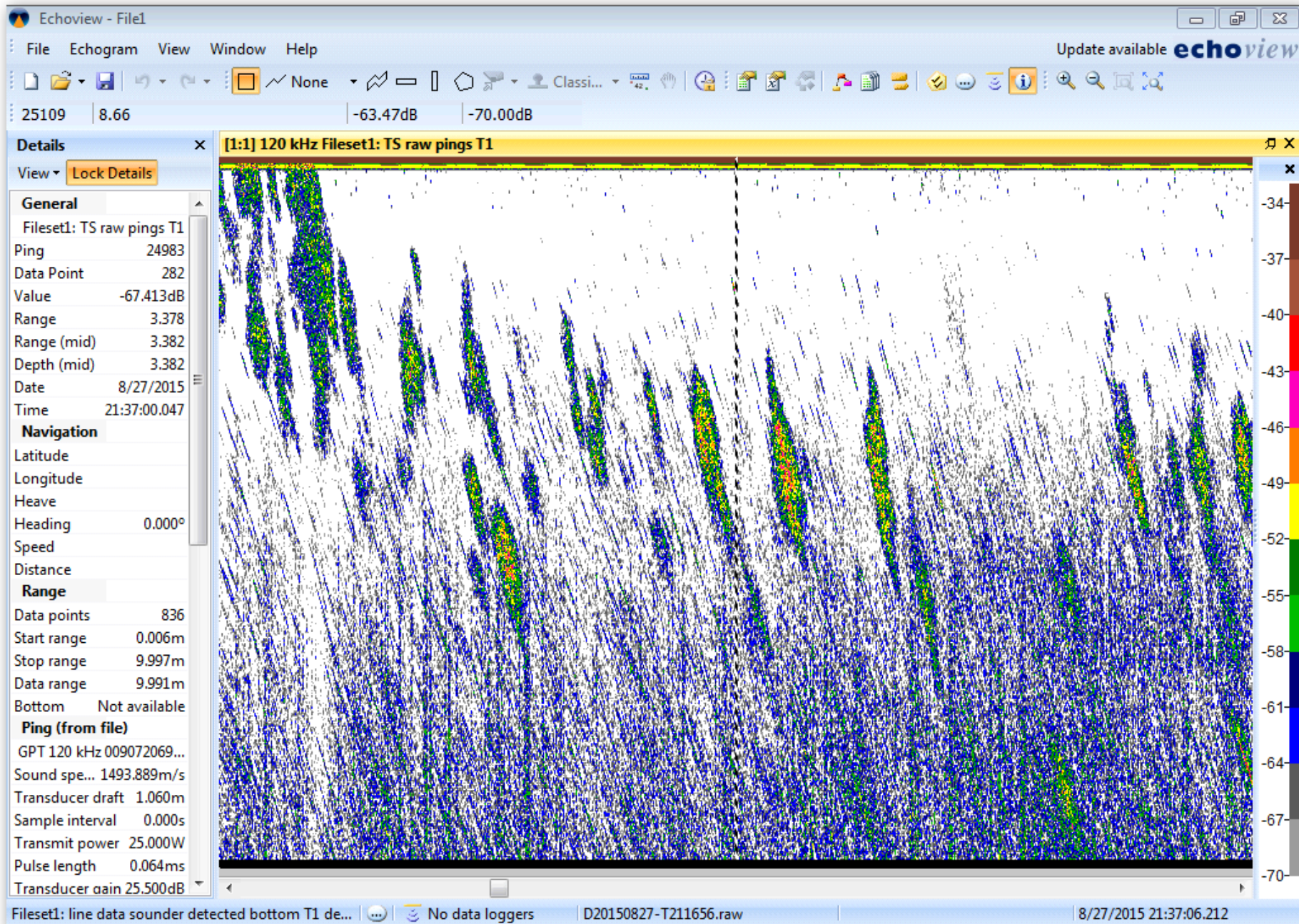


21:37 UTC: target (buoy) visible ~8~9m range in BV

BlueView



Simrad



22:20 UTC: compliant targets (buoys) seen in SP and BV

BlueView

